



DLV5800U Series

DLV5800 Series Non-CE

Features

In response to the needs of cell production system, space-saving delvo screwdrivers are released. Controller is designed for emphasis on space-saving size and lightness.

- Clear disengagement of clutch (low-shock mechanism unavailable)
- Grounded bit installation mechanism
- ESD (electrostatic discharge) protection structure
- New lever is adopted
- Low swing bit mechanism
- Low voltage transformerless controller

[When using DLC0350]

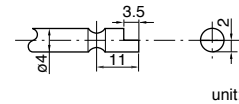
- The rotation speed is variable according to the screw size and work environment.
- Soft start function prevents thread galling.
- By using a commercial counter or PLC with DLC0350, it is possible to control the numbers of screws tightened. (Torque-up signal output, start signal output)

*Please see page 58 for the internal circuit.



Specifications

Model	CE	DLV5820U	DLV5820HU	DLV5840U	Bit Type
	Non-CE	DLV5820	DLV5820H	DLV5840	
Starting Method	Lever Start				
Power Source	From dedicated controller				
Torque Adjustment	Stepless				
Torque (Nm [lbf.in])	0.02 to 0.2 [0.2 to 1.8]			0.15 to 0.4 [1.3 to 3.5]	
Free Speed (min ⁻¹)	750		1000		600
Power Consumption (W)	Approx. 10				
Screw Size (mm)	Machine Screw	1.0 to 2.3		1.6 to 2.6	
	Tapping Screw	1.0 to 2.0		1.4 to 2.3	
Mass (g [lbs])	230 [0.51]				
Cord Length (m)	1.5 (with connector)				
Rated Operation	ON: 0.5 seconds / OFF: 3.5 seconds				
Bit Grounding	Equipped as standard				
Standard Accessories	<ul style="list-style-type: none"> • Bit NK4D(No.0 × 1.8 × 44): 1 pc. • Bit NK4D(No.0 × 2.5 × 44): 1 pc. • Suspension Bail: 1 pc. • Connection Cord (1.5 m) DLW9081: 1 pc. • Low Torque Spring (Silver): 1 pc. 		<ul style="list-style-type: none"> • Bit NK4D(No.0 × 2.5 × 44): 1 pc. • Bit NK4D(No.1 × 4 × 44): 1 pc. • Suspension Bail: 1 pc. • Connection Cord (1.5 m) DLW9081: 1 pc. 		



Model	DLC0250E	DLC0350E	DLC0350F	DLC0350G	DLC0350GG
Features	Non-CE				
Power Source	100 V AC, 50/60 Hz	100 V AC, 50/60 Hz	115 V AC, 50/60 Hz	230 V AC, 50/60 Hz	230 V AC, 50/60 Hz
Mass (g [lbs])	300 [0.66]		900 [1.98]		
Function	Soft Start	×	○		
	Variable Speed	×	○		
Output signal (NPN)	×		Start/Torque-up		
Plug Shape	USA		UK	Europe	
Power Cord Length (m)	2				

Optional Accessories

Sleeve for Vacuum Pickup DLS2000 Series	Vacuum Pickup DLP5300	Torque Adjustment Ring Cover DLW5700
 See page 49	 See page 49	 This minimizes tampering or accidental turning of the torque adjustment ring once the torque is set.
Select according to the screw shape	For screw vacuum pickup *DLS2120/DLS2124 included	

Torque Diagrams (for reference)

